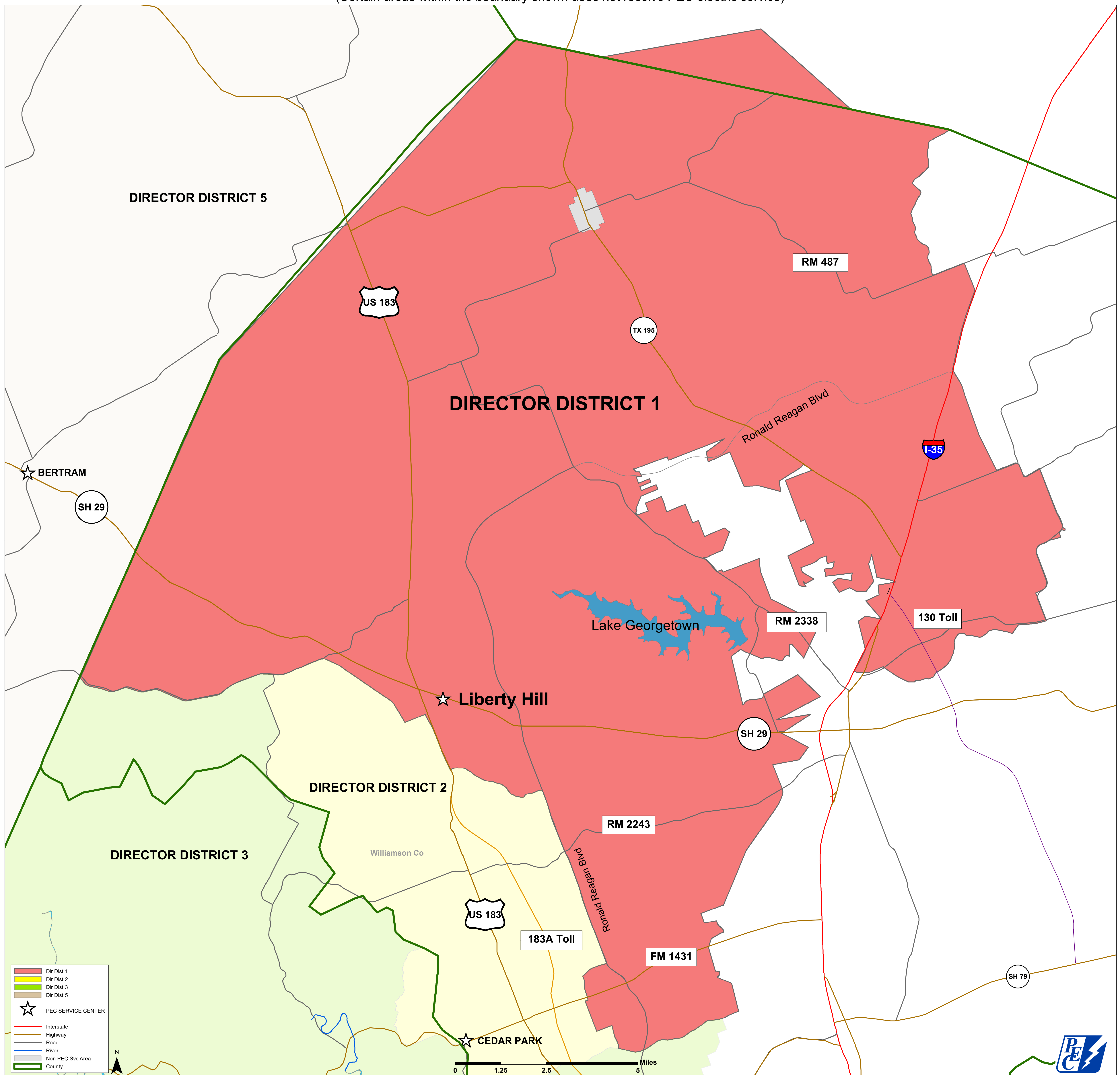


Director District 1 Boundary November 2022
(Certain areas within the boundary shown does not receive PEC electric service)



DIRECTOR DISTRICT 5

US 183

RM 487

TX 195

DIRECTOR DISTRICT 1

Ronald Reagan Blvd

★ BERTRAM

SH 29

I-35

Lake Georgetown

RM 2338

130 Toll

★ Liberty Hill

SH 29

DIRECTOR DISTRICT 2

Williamson Co

DIRECTOR DISTRICT 3

US 183

RM 2243

183A Toll

Ronald Reagan Blvd

FM 1431

★ CEDAR PARK

SH 79

- Dir. Dist 1
- Dir. Dist 2
- Dir. Dist 3
- Dir. Dist 5
- PEC SERVICE CENTER
- Interstate
- Highway
- Road
- River
- Non PEC Svc Area
- County

0 1.25 2.5 5 Miles

